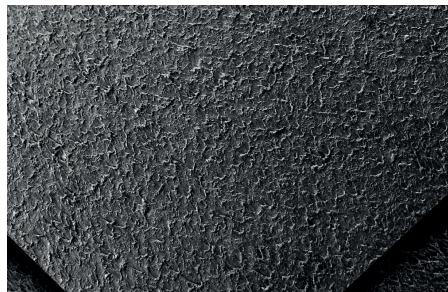


Specialist Geomembranes

Technical Data Sheet

Landflex PE100LLT & PE150LLT Textured LLDPE (single or both sides)



A high quality, single layer LLDPE suitable for use as a barrier membrane on brownfield sites, petrol stations, coalfields, landfill and contaminated industrial areas. The material is highly suited to attenuation ponds, lagoons, water features & as a high performance damp proof membrane because of its high puncture resistance. The membrane offers protection from Carbon Dioxide, Methane and Radon as well as certain common hydrocarbons.

All Landflex PE-LL geomembranes are certified according to the relevant European Standards: EN 13361, EN 13362, EN 13491, EN 13492, EN 13493, EN 15382 & EN 13967

The information herein is based upon data obtained by the manufacturer and is considered accurate. However, no warranty is expressed or implied regarding the accuracy of this data. This information is furnished upon the condition that the person receiving it shall evaluate its suitability for the specific application.

Material Properties	Unit	Test Method	Typical Values 1.0 mm	Typical Values 1.5 mm
Density	g/cm ²	DIN EN ISO 1183-1	<0.940	<0.940
Melt flow range 190/2,16	g/10 min	DIN EN ISO 1133	0.20 - 0.70	0.20 - 0.70
Carbon black content (TGA)	%	-	2.0 - 3.0	2.0 - 3.0
Carbone black dispersion	-	-	Category 1-2	Category 1-2
Durability				
Oxidation resistance	-	DIN EN ISO 14575	Fulfilled	Fulfilled
Oxidative induction time (OIT)	Min	ASTM D 3895	>100	>100
Stress crack resistance	H	DIN EN 14576	>200	>200
Weathering resistance	H	DIN EN 12224	>3000	>3000
Root resistance	-	DIN EN 14416	Fulfilled	Fulfilled
Resistance to Leaching	-	DIN EN 14415	Fulfilled	Fulfilled
Chemical resistance	-	DIN EN 14414	Fulfilled	Fulfilled
Microbiological resistance	-	DIN EN 12225	Fulfilled	Fulfilled
Functional Properties				
Foldability at low temperatures	°C	DIN EN 495-5	< -40	< -40
Dimensional stability	%	DIN EN 1107-2	< 2.0	< 2.0
Mechanical Properties				
Thickness Tolerance	mm %	ASTM D 5994 DIN EN ISO 9863-1	1.00 ±5	1.00 ±5
Asperity height Tolerance	mm	ASTM D 7466 GRI / GMI3	0.25 -0.00	0.25 -0.00
Tensile strength at yield Tolerance	Mpa	DIN EN ISO 527 Type 5/100 mm/min	14 -3	14 -3
Elongation at yield Tolerance	%		12 -2	12 -2



Butyl Products Group Ltd.

Lingfield House, 11 Radford Crescent, Billericay,
Essex, CM12 0DW, United Kingdom.

T: +44 (0) 1277 653 281 F: +44 (0) 1277 657 921

E: enquiries@butylproducts.co.uk W: butylproducts.co.uk

E: enquiries@butek-landline.co.uk W: butek-landline.co.uk

Butek Landline

Containment Solutions

Spec. 23.2 Rev. B

Specialist Geomembranes

Technical Data Sheet

Landflex PE100LLT & PE150LLT Textured LLDPE (single or both sides)



Material Properties	Unit	Test Method	Typical Values 1.0 mm	Typical Values 1.5 mm
Mechanical Properties				
Tensile strength at break Tolerance	Mpa	DIN EN ISO 527 Type 5/100mm/min	36 -3	36 -3
Elongation at break Tolerance	%		900 -100	900 -100
Tear resistance Tolerance	N/mm	ISO 34, Method B Procedure (a) 500mm/min	130 -20	110 -20
Static puncture Tolerance	kN	DIN EN ISO 61551	4.0 -1.0	- -
Bursting pressure	%	DIN 61551	>9	-
Resistance to static loading	-	DIN EN 12730	Fulfilled	-



Example application: Where side slope angles are greater allowing for an increased friction angle to be maintained, improving backfill stability.



Butyl Products Group Ltd.

Lingfield House, 11 Radford Crescent, Billericay,
Essex, CM12 0DW, United Kingdom.

T: +44 (0) 1277 653 281 F: +44 (0) 1277 657 921

E: enquiries@butylproducts.co.uk W: butylproducts.co.uk

E: enquiries@butek-landline.co.uk W: butek-landline.co.uk

Butek Landline

Containment Solutions

Spec. 23.2 Rev. B